

# KRUPS

KH442D80 多士炉

EN

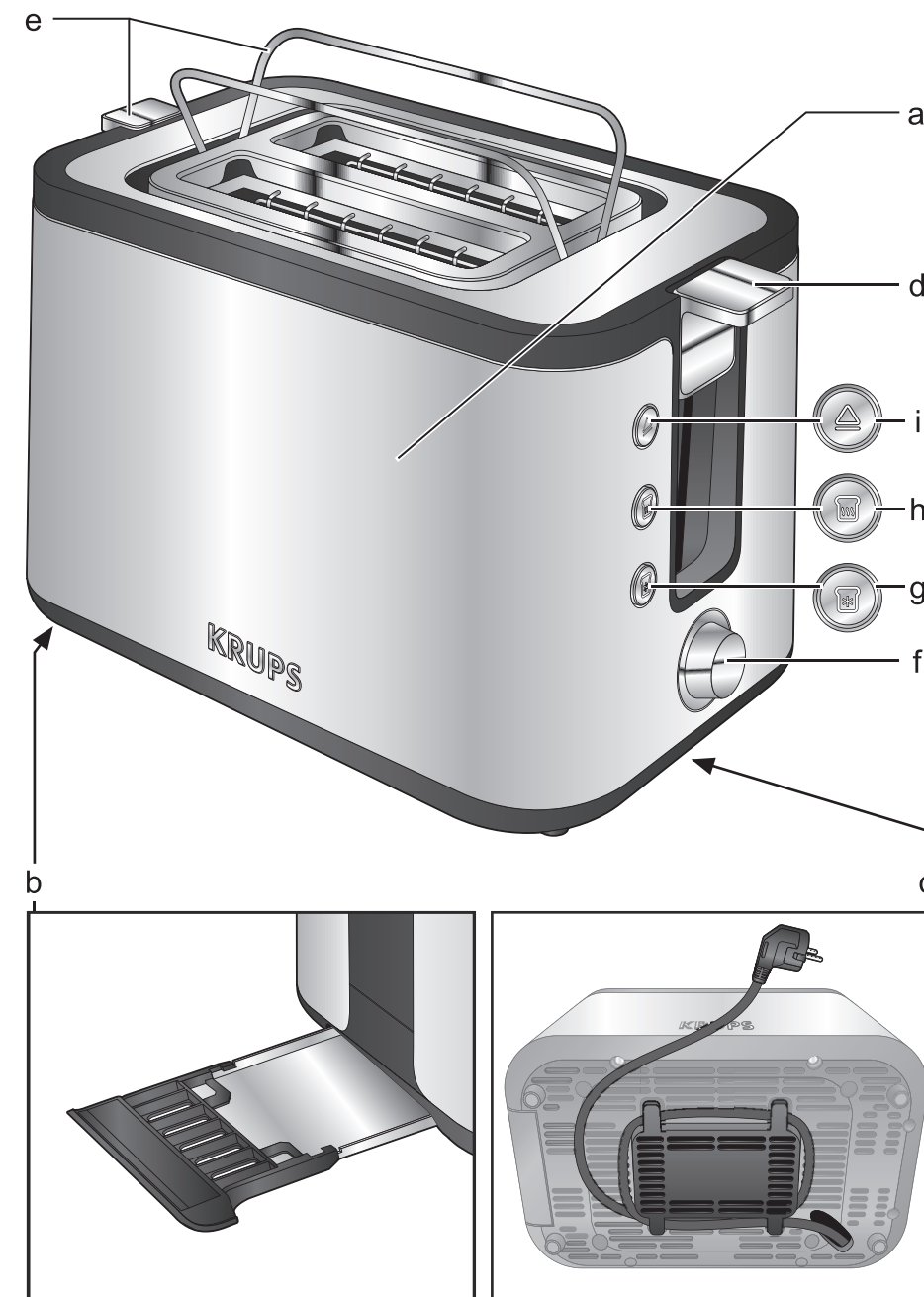
CN

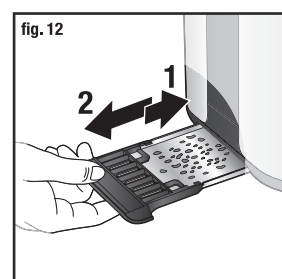
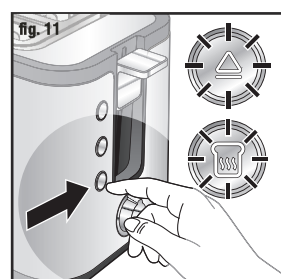
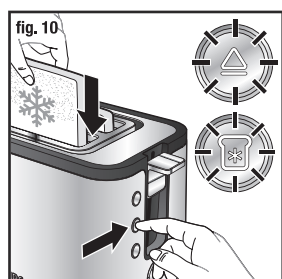
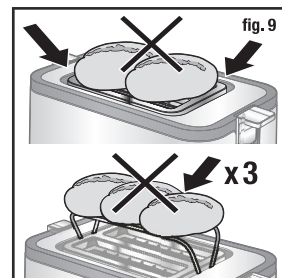
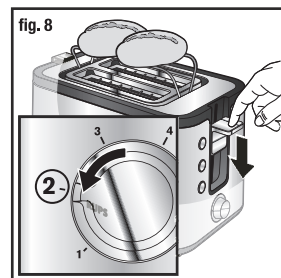
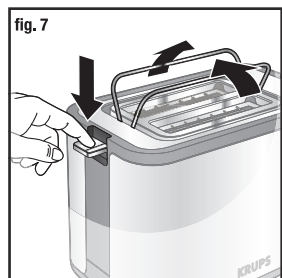
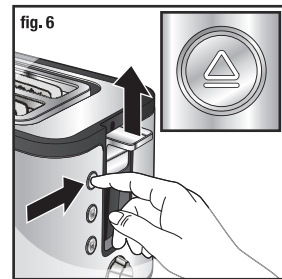
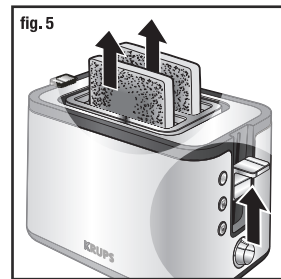
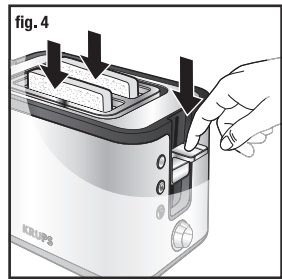
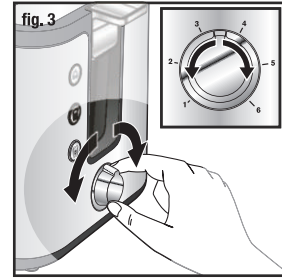
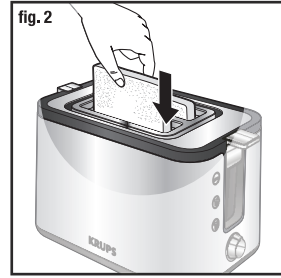
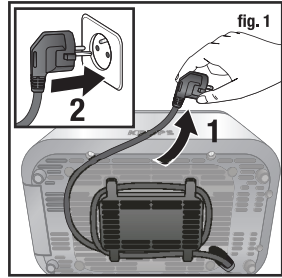


NC00128074 - R - alisation : Espace Graphique

WWW.KRUPS.COM

WWW.KRUPS.COM





**CAUTION: the safety precautions are part of the appliance. Read them carefully before using your new appliance for the first time. Keep them in a place where you can find and refer to them later on.**

## DESCRIPTION

- |                                |                                   |
|--------------------------------|-----------------------------------|
| <b>a</b> Heat insulated casing | <b>f</b> Toaster browning setting |
| <b>b</b> Crumb tray            | <b>g</b> Defrost button           |
| <b>c</b> Cord storage          | <b>h</b> Reheat button            |
| <b>d</b> Lowering lever        | <b>i</b> Stop button              |
| <b>e</b> Bun warmer            |                                   |

## BEFORE FIRST USE

- Remove all packaging and other accessories inside as well as outside the appliance.
- Unwind the cord from under the toaster (**Fig. 1**).
- Plug the toaster into the wall socket.
- Turn the dial to the maximum browning setting without inserting any bread, then press the lever down. Repeat the toasting sequence twice to remove the "new" smell.

## USING THE TOASTER

- Insert the slices of bread (**Fig. 2**).  
Do not use slices which are too large or too thick, as they must not be allowed to stick in the toasting well.
- Select the desired toasting setting (**Fig. 3**).
- Choose between 6 different degrees of browning by setting the selector to the appropriate position:  
Position 1 = lightly toasted  
Position 6 = very well toasted
- When first using, try out the toasting setting, as the result depends upon the type of bread and the degree of moisture.  
Generally speaking, a higher temperature is required for breads other than white. Turn the toasting grade selector to a lower number if, for example, only one slice of bread is being toasted.

### Caution:

**Relatively dry slices of bread, or bread that has already been toasted once, will brown much more quickly and may under certain circumstances catch fire. Therefore set the heat control to a lower setting and do not leave the toaster unattended.**

- Fully depress the lowering lever, which will then lock into position (**Fig. 4**).  
The appliance will begin to operate and the STOP button will illuminate. The handle will only lock if the toaster is plugged in.
- After completion of the toasting operation, the toast will automatically be raised and the appliance will switch itself off (**Fig. 5**).
- Remove the bread. To make it easier to remove the bread you can lift the lowering lever as far as it will go.
- To stop the toaster when toasting is underway, press the "stop" button (**Fig. 6**).

### Note:

**Should a slice of bread become trapped in the toasting well, unplug the power cord, let the appliance cool down and then carefully free the toast without touching the heating elements.**

## ADDITIONAL ACCESSORIES

### Bun Warmer

- Raise the bun warmer by pressing the handle on the corresponding bun warmer function (e) (Fig. 7).
- Position the rolls on the shelves and press on the lowering lever until it locks automatically. Do not go beyond position 2. Start the appliance (Fig. 8).
- Please take care for rolls rewarming function that the rolls and the lift have to be in the right position (Fig. 9). Do not put any pastries directly on the toaster to reheat them. Use the bun warmer instead (e).
- To improve the results, turn the rolls over and repeat the toasting operation.
- After use, lower the bun warmer by raising the handle on the bun warmer feature.
- The bun warmer should not be used for longer than 10 minutes.

### Defrost feature

- The toaster has a pre-programmed defrosting feature. Toasting frozen bread takes longer than toasting bread which is not frozen.
- Insert one or two frozen slices of bread or toast in the toaster (Fig. 10).
- Select the desired toasting level and lower the handle (please see the "OPERATING MODE" paragraph).
- Press the "☐" button (Fig. 10).
- The "DEFROST" and "STOP" buttons will illuminate.

### Reheat feature

- The toaster has a pre-programmed feature to reheat pieces of bread or toast without toasting them too much.
- The reheating time is automatic, regardless of the position of the setting button (roughly 30 seconds).
- Insert the pieces of bread or toast in the toaster and lower the handle.
- Press the "☐" button (Fig. 11).
- The "REHEAT" and "STOP" buttons will illuminate.

## CLEANING

- **Before pulling out the crumb tray, allow the toaster to cool for at least ten minutes after completion of the preceding toasting operation.**
- Before commencing the cleaning operation, pull out the mains plug.
- It can be removed by pressing above, avoid all contact with metal parts. Clean the toaster regularly (Fig. 12).
- **Never immerse the appliance in water or put it under running water.**
- Never use an abrasive sponge to clean the toaster. Clean it with a damp cloth and wipe it with a soft, dry cloth in order to make it shine.
- Remove the crumb tray by pressing above and remove the crumbs (Fig. 12).
- Wipe using a damp cloth then return the crumb tray to its place.
- **Never use** the toaster without the crumb tray.

## REPAIR SERVICE

PROBLEM	SOLUTION
The toaster does not work.	Ensure the plug is properly connected to the socket. If the toaster is still not working, take it to an approved KRUPS service centre.
The bread is stuck in the appliance.	Unplug the appliance and leave it to cool. Remove the bread carefully. Be careful not to damage the heating elements when removing the bread. Never use a metallic object to remove the bread.
The bread is too brown or not brown enough.	Check the setting level selected. Select a lower level if your bread is too brown, or a higher level if it is not brown enough. Ensure the freezing or reheating buttons have not been selected.
The bread pops out almost immediately and is not toasted.	Ensure the handle has been lowered to the bottom. Also check that the reheating button was not selected. If the bread still does not stay in the toaster, bring your appliance to an approved KRUPS service centre.
Smoke is coming out of the toaster.	It is possible that the toasting level selected is too high. Press the STOP button to stop the toasting cycle and unplug the appliance.
The cord is damaged.	If the cord on the appliance is damaged, it must be replaced in an approved KRUPS service centre.

## DISPOSAL



The packaging comprises exclusively environmentally-friendly materials which should be disposed of according to the local recycling arrangements.

Disposal methods for the appliance itself can be found by enquiry at the appropriate department of the local authority in your area.

**Environment protection first !**

Your appliance contains a lot of recoverable or recyclable material.

When disposing of it, take it to a local civic waste collection point.

## 电器描述

- |                 |                 |
|-----------------|-----------------|
| <b>a</b> 机身     | <b>f</b> 6档烘烤旋钮 |
| <b>b</b> 集屑盘    | <b>g</b> 解冻按键   |
| <b>c</b> 内藏式电源线 | <b>h</b> 再加热按键  |
| <b>d</b> 控制杆    | <b>l</b> 停止按键   |
| <b>e</b> 烘烤架    |                 |




## 安全指引

- 在首次使用本电器前，请仔细阅读本说明，并妥善保管以便日后查阅。
- 本电器仅为家用电器。任何商业使用、未能正确使用而引起的故障，制造商不承担任何责任及保修义务。
- 拆除包装并确保电器完好，如电源线或插头损坏，不要使用电器，请与KRUPS售后服务中心取得联系。
- 本品如使用在以下条件时，制造商不承担保修义务。
  - 商场的员工餐厅，办公室或者其他专业性使用环境
  - 露天场合
  - 旅馆、汽车旅馆或其他商用住宅环境
  - 家庭式旅馆
- 有心理、身体或者感官障碍、及不具备足够经验或知识的人员（含儿童）不允许使用该电器，除非有其监护人密切监督并进行指导。儿童玩耍时请远离该电器。
- 电器不能在外接定时器或独立遥控控制系统的方式下工作。
- 儿童或在无成年人监管情况下禁止使用、清洁或维护该电器。
- 拆除包装并确保电器完好。如电源线或者插头损坏，不要使用电器，请先与KRUPS售后服务中心取得联系。
- 面包可能燃烧，因此电器不得在靠近窗帘，毛织物，木制品及其他可燃材料的地方（包括吊柜，橱柜下面）使用。使用时必须有人看管。
- 请尽量避免8岁以下儿童接触电器和电源线。
- 请用抹布轻拭多士炉内部。
- 定期清洁残屑盘。
- 使用前请检查所使用的电源电压与电器铭牌标识是否一致，并确保有效接有地线。
- 开启或者关闭电器前，确保控制杆处于抬起状态。
- 在不使用及电器清洁前，请拔掉电源插头，切断电源。
- 请勿将电器置于潮湿环境。
- 请勿将电器，电源线及插头浸入水中。
- 请勿将过大，含油，含馅料的食物或者餐具（勺子，餐刀，等等）放入多士炉烘烤，以免起火。
- 请勿将过厚的切片面包放进多士炉，以免卡住。
- 使用电器时，请勿将面包取出。

## 首次使用指引

- 拆除包装并确保电器完好。如有疑问，不要使用电器，请先与KRUPS售后服务中心取得联系。
- 展开多士炉底部的电源线（如图1）。
- 接通电器电源。
- 为了去除新电器的味道，请在不加入切片面包的情况下让多士炉最高档烘烤运行两次。

## 多士炉的使用

- 将切片面包放进多士炉中（如图2）。不可烘烤过厚或者过薄的切片面包，避免将切片面包贴于炉壁上。
- 选择您想要的烘烤档数（如图3）
- 旋转6档烘烤旋钮，选择您想要的档位。1档轻微烘烤，6档深度烘烤。
- 首次使用时，可先尝试一下各个档位。烘烤效果与面包类型和湿度相关，一般来说，白切片以外的其他面包需要更高的烘烤温度。若一次只烘烤一片面包，请选用较低档位烘烤。
- **注意：**如果切片面包很干或已经烘烤过一次，烘烤时焦黄速度很快，甚至有可能会着火。因此，请您使用低档进行烘烤并确保有人看管。
- 向下按控制杆直至锁定（如图4）。此时，多士炉开始烘烤，“”指示灯亮起。注意，如果电器没有接通电源，控制杆将不会锁定。
- 烘烤完成后，切片面包自动弹出，停止烘烤，切断电源。（如图5）
- 您还可以轻抬起控制杆以升起面包，方便拿取。
- 在烘烤过程中，您可以按下“”按键结束烘烤（如图6）




**注意：**如果切片面包卡在多士炉壁中，请拔下电源线，待多士炉彻底冷却后再取出切片面包，并小心不要碰到发热组件。

## 配件




### 烘烤架

- 轻按烘烤架的控制杆，升起烘烤架（e）（如图7）。
- 将圆面包置于烘烤架上，按下控制杆直至自动锁定，烘烤档位最好不要超过2档，多士炉开始烘烤（如图8）。
- 确保圆面包处于正确位置。（如图9）不要将糕点直接放进多士炉里再加热，请使用烘烤架进行再加热（e）。
- 为提升面包口感，可将面包翻面并重复烘烤。
- 使用完毕以后，轻抬烘烤架的控制杆，烘烤架落下。
- 烘烤架的单个使用时间不要超过10分钟。

### 解冻

- 此款多士炉具有解冻功能。冷冻面包的烘烤时间要比常温面包的烘烤时间长。
- 将1-2片冷冻切片面包放进多士炉（如图10）。
- 选择您想要的烘烤档位，按下控制杆（参见“多士炉的使用”）。
- 按下“”按键（如图10）。
- “”和“”按键指示灯会亮起。


### 再加热

- 此款多士炉具有再加热功能，可再加热切片面包且不烘烤过度。
- 再加热时间恒定（约30秒），且与烘烤档位无关。
- 将切片面包放进多士炉，按下控制杆。
- 按下“”按键（如图11）。
- “”和“”按键指示灯会亮起。

## 清洗保养

- 使用完多士炉，请等待至少10分钟，待多士炉冷却后方可清理集屑盘。
- 清洗多士炉前，请先切断电源，并待多士炉彻底冷却。
- 轻按集屑盘，将其取出，切勿磕碰多士炉的金属机身。请定期清洗多士炉（如图12）。
- 切勿将集屑盘浸入水中或用水冲洗。
- 切勿用粗糙的海绵清洗多士炉。建议您使用湿布或柔软的干布擦拭多士炉，这样能够保持多士炉的整洁。
- 轻按集屑盘将其取出，倒掉面包屑（如图12）。
- 用湿布擦拭集屑盘后将其放回原位。
- 切勿使用未插入集屑盘的多士炉。

## 维修服务

问题	解决方案
电器无法正常运转	请先确认电源线插头是否接入插座。 如果电器仍然无法正常工作，请联系KRUPS售后服务中心。
面包卡在电器中	切断电源，待电器彻底冷却。小心取出面包。请勿用力过猛，以免损伤加热组件。 不要使用金属工具夹取面包。
面包焦糊/不够焦黄	检查您选择的档位。如果面包焦糊，请调至低档；如果烘烤度不够，请调至高档。同时，确保您没有同时使用再加热或解冻功能。
切片面包迅速弹起导致无法烘烤	确认控制杆按到底部。确认没有按下再加热按键。 如果切片面包仍然无法放入多士炉中，请联系KRUPS售后服务中心。
电器冒烟	大部分冒烟问题都是由于烘烤档位过高引起的。按下“  ”按键，终止烘烤循环，拔下电器电源线。
电源线损坏	如果多士炉电源线损坏，请及时将电器送至KRUPS售后服务中心更换电源线。

## 回收利用



使包装采用环保原材料，可根据相关回收管理条例进行处置。  
需要销毁电器时，请先咨询您当地的相关部门。

**让我们一起保护环境！**



您的电器含很多可循环再用或可回收的材料。  
请将电器送往城市垃圾收集站。





