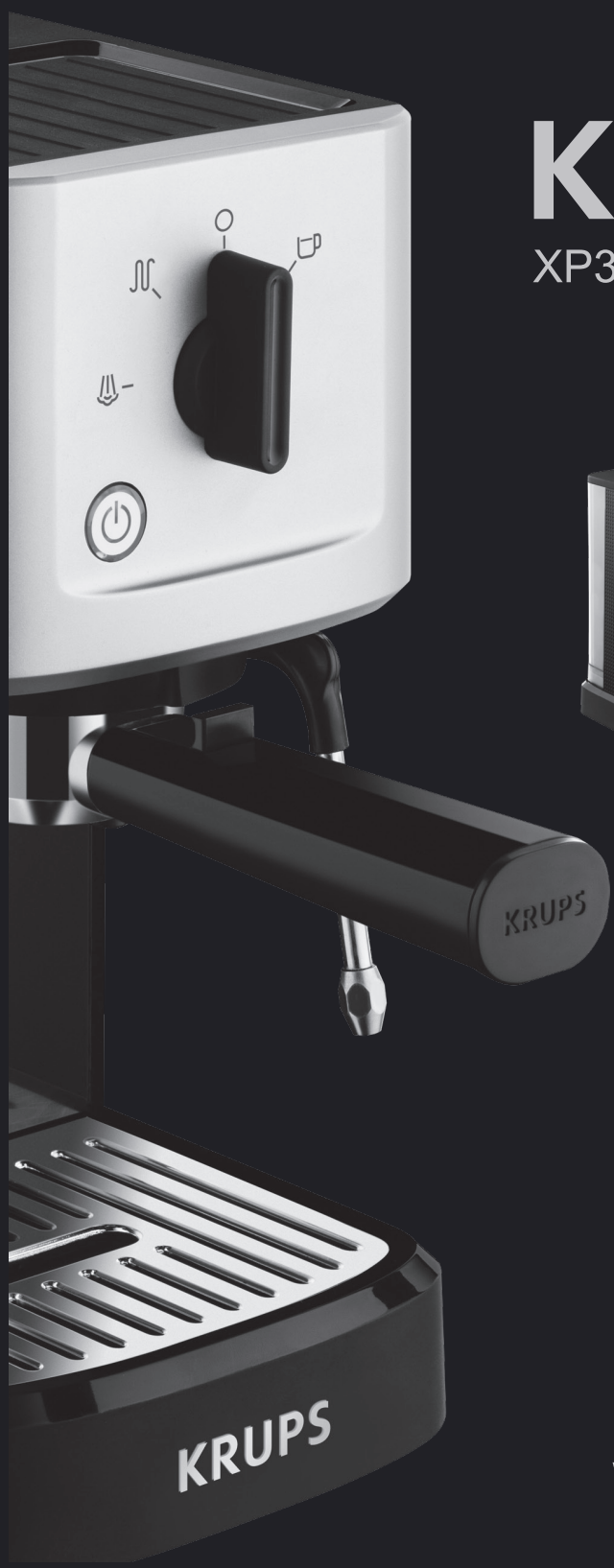


KRUPS

XP3440 半自动咖啡机

EN

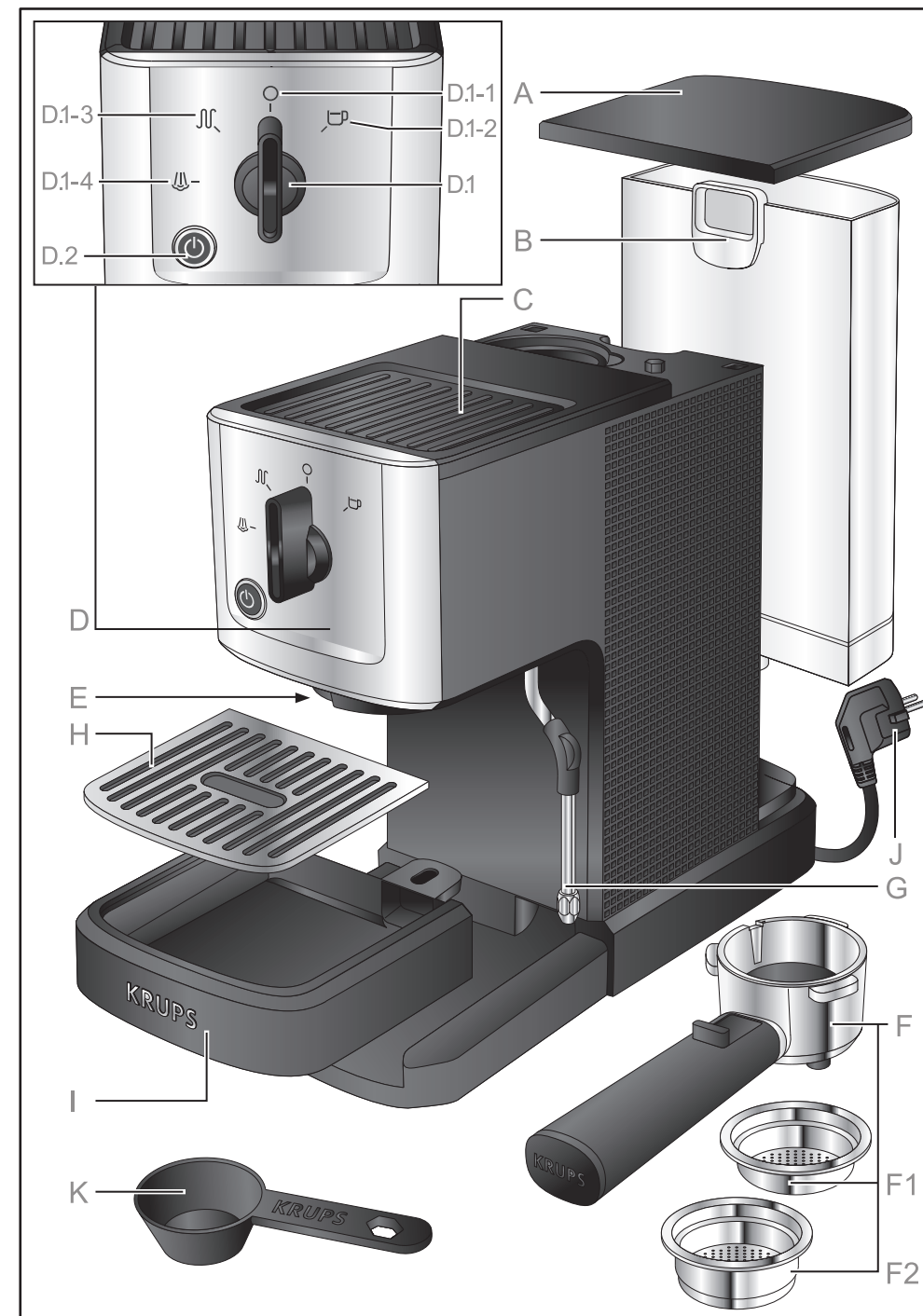
CN

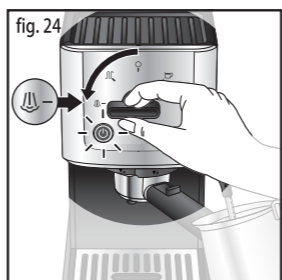
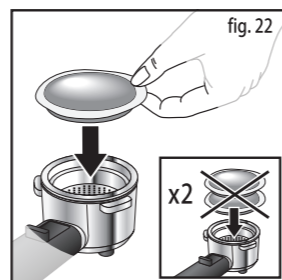
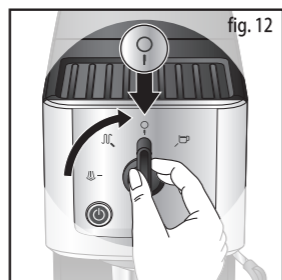
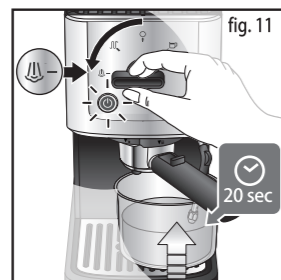
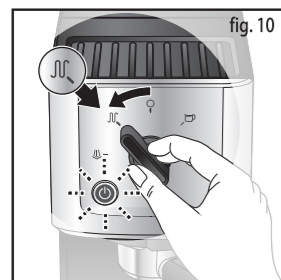
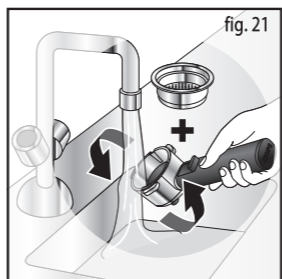
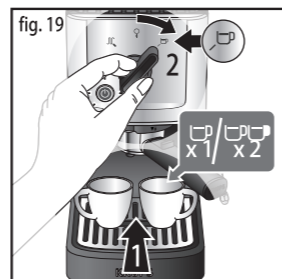
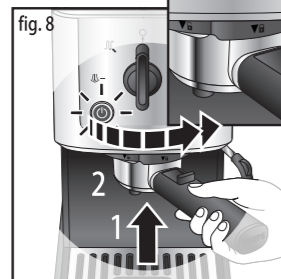
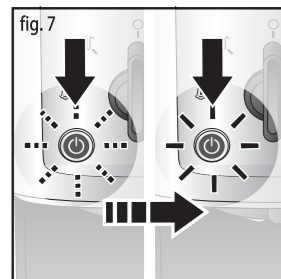
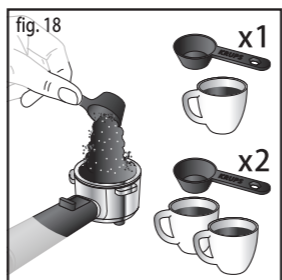
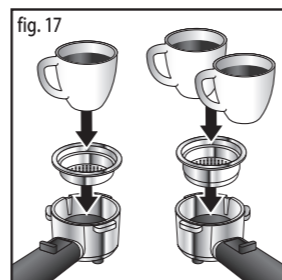
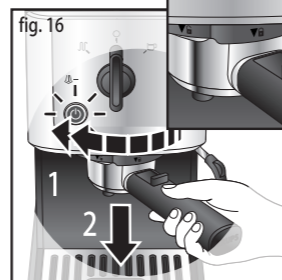
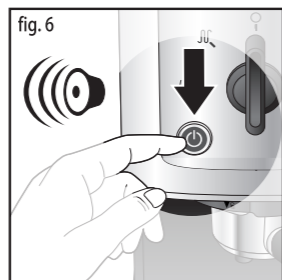
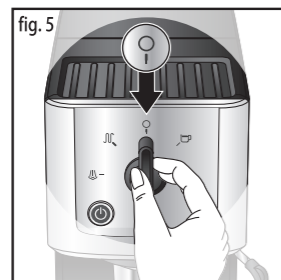
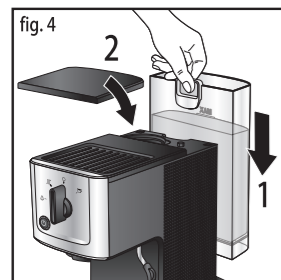
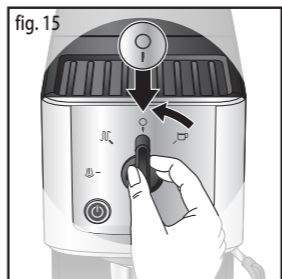
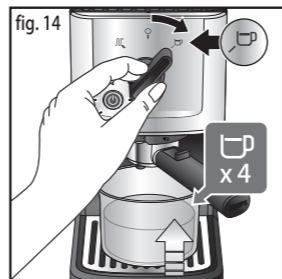
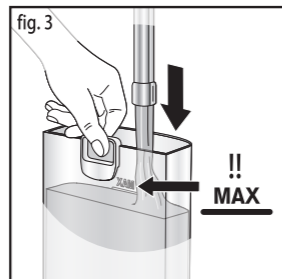
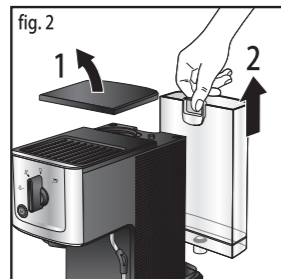
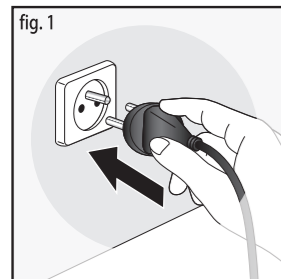


8080015838-02

WWW.KRUPS.COM

WWW.KRUPS.COM





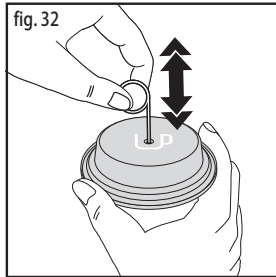
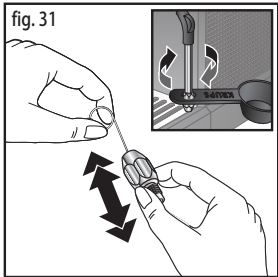
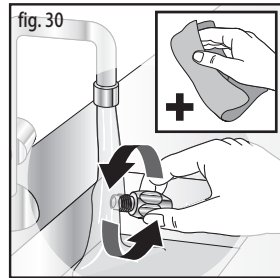
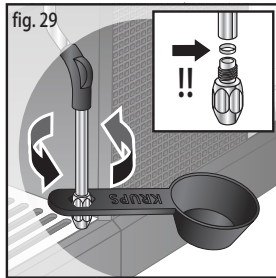
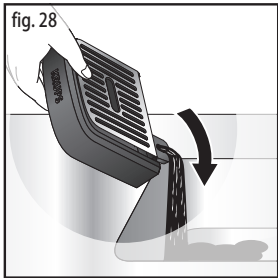
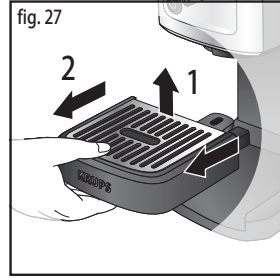
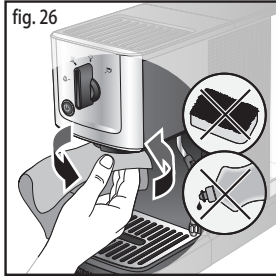
KRUPS INTERNATIONAL GUARANTEE

Date of purchase: / Date d'achat / Fecha de compra / Data da compra / Data d'acquisto / Kaufdatum / Aankoopdatum / Kobsdato / Inköpsdatum / Kjøpsdato / Ostopäivä / Data zakupu / Data vânzării / Isigijimo data/ Ostukuupäev / Datum nakupa / Sorozatszám / Datum nákupu / Pirkuma datums / Datum Kupovine / Datum kupnje / Data cumpărării / Datum nákupu / Tarikh pembelian / Tanggal pembelian / Ngày mua hàng / Satın alma tarihi / Дата продажи / Дата на закупуване / Датум на купување / Сатылган мерзімі / Ημερομηνία αγοράς / Ψάδωνρη ορη / Ծածրի օրը / Ծածրի օրը / 購買日期 / 購入日 / 구입일자 / تاريخ الشراء / تاريخ خري

Product reference: / Référence du produit / Referencia del producto / Nome do produto / Tipo de prodotto / Typnummer des Gerätes / Artikelnummer van het apparaat / Referencenummer / Produktreferens / Artikelnummer / Tuotennumero / referencia produktu / Model / Gaminio numeris / Toote viitenumber / Tip aparata / Vásárlás kelte / Тип аппарата / Produkta atsauces numurs / Model proizvoda / Oznaka proizvoda / Cod produs / Produk rujukan / Referensi produk / Mã sản phẩm/ Ürün kodu / Модель / Модель / Модел на уреда / Модел / Кодикос προϊόντος / Ծածրի օրը / 產品模型 / 製品レファレンス番号 / 제품명 / مرجع المنتج الكامل / مرجع المنتج الكامل

Retailer name and address: / Nom et adresse du vendeur / Nombre y dirección del minorista / Nome e endereço do revendedor / Nome e indirizzo del negozio / Name und Anschrift des Händlers / Naam en adres van de dealer / Forhandler navn & adresse / Återförsäljarens namn och adress / Forhandler navn og adresse / Jälleenmyyjän nimi ja osoite / Nazwa i adres sprzedawcy / Numele și adresa vânzătorului / Parduotuvės pavadinimas ir adresas / Müüja kauplus ja aadress / Naziv in naslov trgovine / Tipusszám / Názov a adresa predajcu / Veikala nosaukums un adrese / Naziv i adresa malprodaje / Naziv i adresa prodavca / Naziv i adresa prodajnog mjesta / Nume și adresă vânzător / Název a adresa prodejece / Nama dan alamat peruncit / Nama Toko Penjual dan alamat / Tên và địa chỉ cửa hàng bán/ Satici firmanın adı ve adresi / Название и адрес продавца / Назва i адреса продавця / Търговки обект / Назив и адреса на продавницата / Сатушының аты және мекен-жайы / Επωνυμία και διεύθυνση καταστήματος / Ψάδωνρηի անվանումը և հասցեն / 零售商的店名和地址 / 販売店の名前、住所 / 소매점 이름과 주소 / اسم بائع التجزئة و عنوانه / نام درس خرده فروش

Distributor stamp / Cachet distributeur / Sello del distribuidor / Carimbo do revendedor / Timbro del negozio / Händlerstempel / Stempel van de dealer / Forhandler stempel / Återförsäljarens stämpel / Forhandler stempel / Jälleenmyyjän leima / Pieczęć sprzedawcy / Ștampila vânzătorului / Antspaudas / Tempel / Žig trgovine / Eladó neve, címe / Razitko predajcu / Zimogs/ Pečat malprodaje/ Pečat prodavca / Pečat prodajnog mjesta/ Štampila vânzătorului/ Razitko prodejece/ Cap peruncit / Cap dari Toko Penjual / Cửa hàng bán đồng dấu/ Satici Firmının Kaşesi / Печать продавца / Печатка продавця / Печат на търговския обект / Печат на продавницата / Сатушының мөрі / Σφραγίδα καταστήματος / Ծածրի կնիքը / 零售商的蓋印 / 販売店印 / 소매점 직인 / مهر خرده فرو / ختم بائع التجزئة



Thank you for your confidence in and loyalty to KRUPS products. You have just purchased the most compact espresso machine in our range.



CAUTION: the safety precautions are part of the appliance. Read them carefully before using your new appliance for the first time.

DESCRIPTION

A Water reservoir lid	E Filter holder mount
B Removable water tank	F Filter holder
C Cup tray	F1 Filter one cup
D Control panel:	F2 Filter two cups
D1 Selection button (coffee or steam)	G Steam wand
D1-1 0 Position/p reheating espresso	H Drip grid
D1-2 Preparing an espresso	I Drip tray
D1-3 Preheating steam	J Power cable
D1-4 Preparing steam	K Measuring scoop
D2 On/Off button with indicator light	

TECHNICAL SPECIFICATIONS

- Electromagnetic pump: 15 bars
- Filter holder
- 1 or 2 cups
- Soft capsule compatible
- Steam function
- Automatic shut-off after 5 minutes (environmental protection)
- Removable reservoir (capacity: 1 litre)
- Power: 1460 W
- Voltage: 220V - 240V~ - 50Hz
- Safety devices to protect against overheating
- Dimensions: H. 286 mm, L. 145 mm, D. 315 mm



IMPORTANT!

Voltage: this appliance is designed to function on 220-240V alternating current only.

Type of use: this appliance is designed for DOMESTIC USE ONLY

PRACTICAL TIPS

It is preferable to use freshly roasted coffee. Ask a roaster for advice. The freshness of coffee is only preserved for a few weeks after roasting. Good packaging may improve and preserve the coffee for longer. If you are not sure about the quality of the packaging, choose a recently roasted coffee.

The coffee must always be ground just before being prepared.

What type of coffee should i choose?

- For a coffee rich in aroma

Choose pure Arabica coffee or those made from a majority of Arabica coffee.

Artisan roasted coffees are the best as they offer more complex and refined aromas. To vary the flavours, try pure origin coffees.

- For a full-bodied coffee

Choose Robusta blended coffees - not specified 100% Arabica - Italian roasted coffees, or those specified as Italian.

- Keep ground coffee in the fridge to maintain its flavour for longer.
- Do not fill your filter holder to the top, but use the measuring scoop (1 scoop for a 50ml cup, 2 scoops for two 50ml cups). Remove excess coffee from the rim of the filter holder.
- If you do not use the appliance for longer than 5 days, empty and rinse the water tank.
- Before removing the tank to fill or empty it, always ensure that the appliance is switched off.
- Always place the appliance on a flat, stable surface.

USING FOR THE FIRST TIME - or after long periods of not using your Espresso maker.

Rinsing and preparing the system before first use.

Before using your coffee machine, clean all the accessories in soapy water and then dry. Rinse the system following the procedure below:

- Plug your machine in (1).
- Open the lid (A) and remove the water tank (B) (2).
- Fill the tank with water at room temperature and place it back on the appliance, ensuring that it is positioned correctly. Close the lid (3-4).
- Ensure that the selection button (D1) is in the O position (D1-1) (5).
- Switch on the appliance by pressing the on/off button (D2). A short beep will sound, this is completely normal. This corresponds to the switching on/off of the pump (6).
- The temperature light flashes and then remains on (7).
- Insert the filter holder (F) (without coffee) into the appliance: turn it to the right as far as it will go (8).
- Place a container with a volume greater than 1/2 litre under the steam wand (9).
- Turn the selection button to Steam preheat (D1-3) (10).
- The button flashes and then remains on: you can now turn the selection button to the Steam position (D1-4) for approximately 20 seconds (11).
- Turn the selection button to the O position (D1-1) (12).
- Then place a 1/2 litre container under the filter holder (13).
- Turn the selection button to the Espresso position (D1-2) (14). Allow water to flow from the tank, equivalent to four 50ml espresso cups. To stop the water flowing through, turn the selection button to the O position (15).
- If the water doesn't flow through (pump initiation) repeat the procedure from the beginning without the filter holder.
- Leave to cool and repeat this procedure four times making sure that the tank contains enough water.
- Leave your appliance to cool between each operation.
- Remove the tank, empty, rinse carefully and place back in the appliance.

**IMPORTANT!**

After five minute of non-use, your appliance will switch off automatically in order to help protect the environment.

**IMPORTANT!**

A beep will sound each time the appliance is switched on or off (when pressing the on/off button (D2)). This is completely normal. This corresponds to the switching on/off of the pump (4).

PREPARING ESPRESSO

**IMPORTANT!**

If the espresso machine is being used for the first time, the appliance must be cleaned as described in the paragraph "USING FOR THE FIRST TIME".

With ground coffee

The type of ground coffee you choose will determine the strength and flavour of your espresso: the finer the coffee, the more intense the espresso.

- Fill the tank with water at room temperature and place it back on the appliance, ensuring that it is positioned correctly (3-4).
- Plug your machine in (1).
- Switch on the appliance by pressing the on/off button. A short beep will sound, this is completely normal. This corresponds to the switching on of the pump (6).
- The temperature light flashes while it is heating up and then remains on (7). The appliance is now ready to use.
- Unlock the filter holder by turning it to the left (16).
- Add the filter for 1 cup or the filter for 2 cups to the filter holder (17).
- Using the measuring scoop, add your ground coffee. (1 scoop = 1 cup, 2 scoops = 2 cups) to the filter (18).
- Remove excess coffee from the rim of the filter holder.
- Insert the filter holder into the appliance, pushing it firmly to the right as far as it will go (8).
- Place one or two cups on the drip tray grid under the filter holder (19).
- Turn the selection button to the espresso position (D1-2) (19).
- After a few moments, the coffee will flow through.
- When the cup(s) is/are full, return the selection button to the O position (15).
- Remove the cup(s).
- Unlock the filter holder by turning it to the left. Remove it from the appliance (16).
- To discard the grounds, turn the filter holder over while holding the filter in place using the tab to allow just the coffee grounds to fall out (20).
- Wash the filter holder and filter under running water to remove any remaining grounds (21).
- For best results, we recommend that you preheat the accessories in advance (filter holder, filter and cup) following the steps below without adding coffee.
- Leave your appliance to cool if you have made five 50ml coffees consecutively.

With a soft capsule

Your machine is compatible with soft capsules (generally 60mm in diameter). Given that this type of capsule is not specifically designed for espresso machines, you will obtain a less intense coffee than with ground coffee.

- Fill the water tank with water at room temperature and place it back on the appliance (3-4).
- Switch on the appliance by pressing the on/off button (6).
- The light flashes while it is preheating and then remains on. The appliance is now ready to use (7).
- Unlock the filter holder by turning it to the left (16). Place a soft capsule in the filter one cup. Capsules are designed to make one cup of coffee. Using two capsules on top of each other is not recommended (22).
- Insert the filter holder into the appliance, pushing it firmly to the right as far as it will go (8).
- To prepare your espresso, follow the procedure for preparing an espresso with ground coffee.
- Leave your appliance to cool if you have made five coffees consecutively.

STEAM FUNCTION

Steam is used to foam milk (to prepare cappuccinos, for example).

- To produce steam, turn the selection button to the Preheat position (D1-3). (10).
- The on/off light will flash again and then remain on. The appliance is now ready to use (7).
- Add 60 to 100ml milk to a container. For best results, we recommend that you use a narrow, fairly short container to fit under the steam wand. The milk and its container must be very cold for optimal results.
- As soon as the light stays on, plunge the steam wand into the milk without touching the bottom of the container (23).
- Turn the selection button to the steam position (D1-4) (24).
- For best results, foam the milk from the bottom of the container but without touching the bottom, for about 10 seconds. Next, tilt and move the container up progressively such that the wand comes to the surface of the milk. Ensure that the wand does not come out of the milk. For best foaming results, make circular movements (25).
- In order to obtain good quality milk froth, we recommend that you use pasteurised or UHT milk and avoid using unpasteurised or skimmed milk.
- Once you have foamed the milk, turn the selection button to the O position (12). At this time the appliance will cool automatically, starting two to three pump cycles intermittently. Once this automatic operation has finished, you can prepare an espresso.
- After turning off the steam, quickly and carefully clean the steam wand using a damp sponge (to ensure that residues do not remain stuck).
- Place a container containing water under the steam wand and repeat the milk foaming procedure exactly, in order to clean the wand.
- To avoid overheating the milk, do not foam for longer than 60 seconds.
- The steam wand is limited to 75 second of use in order to avoid overheating.



IMPORTANT!

Warning! To avoid splashing milk, do not let the wand move above the surface of the milk when using the steam function.



IMPORTANT!

Warning! The steam wand is still hot! Take care not to burn yourself!



IMPORTANT! After switching off the steam, immediately and carefully clean the steam wand as described in the paragraph on: **CLEANING AND SERVICING.**

CLEANING AND SERVICING

A. The appliance

- Unplug the appliance from the power socket each time you clean it, and leave to cool.
- Clean the outside of the appliance from time to time with a damp sponge. Clean and dry the tank, drip tray and grid regularly.
- Rinse the inside of the tank regularly.
- When a fine white layer clouds your tank, follow the descaling process (see paragraph **DESCALING**).
- Do not use alcohol-based cleaning products or solvents.
- After you have unplugged the appliance, regularly clean the grid through which the water passes, as well as the watertight seal, using a damp sponge (26).
- Clean using only a damp cloth without any detergent or scourer.

B. The filter holder

- Using a damp cloth, clean the filter holder mount regularly in order to remove possible coffee residues stuck to the surface (26).
- In order to prolong the useful life of the watertight seal on the brewing head, do not put the filter holder back in place if the coffee machine has not been used for extended periods.
- To remove any deposits that could block the flow of your 1 or 2 cup filter, you may use the needle (32).

C. The drip tray

This must be emptied each time the appliance is used. If several espressos are prepared consecutively, it is recommended that you empty it regularly (27-28) (approximately every five cups). The presence of water is normal and is not a sign of leakage. If necessary, clean the drip tray and the grid with water and a small amount of mild washing up liquid. Rinse and dry.

D. The steam wand

- Place a container containing water under the steam wand.
- To produce steam, turn the selection button to the **Preheat position (D1-3) (10)**.
- The on/off light will flash again and then remain on. The appliance is now ready to follow the steam cleaning cycle.
- As soon as the light stays on, plunge the steam wand into the water without touching the bottom of the container.

- Turn the selection button to the steam position (D1-4) (24).
- Turn on for 20 seconds.
- After turning off the steam, quickly and carefully clean the steam wand using a damp sponge (in order to remove any residue).
- The end of the wand can be removed using the measuring scoop for a deeper clean. Take care not to lose the watertight seal on this end piece (29).
- Rinse it under the tap and then remove any residues using a damp sponge (30).
- You can unblock the wand outlet using a needle.
- Screw it back on using the measuring scoop, checking that the seal is still there, and making sure that the end piece is screwed on correctly (31).

**IMPORTANT!**

Warning! Do not clean any parts of this appliance in a dishwasher.

DESCALING

Regularly descaling your appliance, as described in paragraphs A and B for coffee and steam function, is the main factor in prolonging its useful life. The frequency with which you descale the appliance is related to the hardness of your water. Get advice from your water supplier.

During this procedure, do not place your appliance on a marble work surface. The descaler might alter it.

- To help you, below is a table indicating the frequency with which you should descale the appliance depending on the hardness of the water used in the machine:

DESCALING FREQUENCY			
Average number of coffees per week	Soft water (<19°f)	Hard water (19-30°f)	Very hard water (30-30°f)
Fewer than 7	Once a year	Every 8 months	Every 6 months
From 7 - 20	Every 4 months	Every 3 months	Every 2 months
More than 20	Every 3 months	Every 2 months	Every month

If in doubt, monthly descaling is recommended.

No repairs on the coffee machine in the case of:

- no descaling carried out,
 - limescale build-up,
 - accessories cleaned in a dishwasher,
- will be covered by the guarantee.

A. Descaling the system

- Unplug the appliance.
- Insert the filter holder (without coffee) into the appliance and lock it in place, turning it to the right as far as it will go (8).
- Place a container with a volume greater than 1/2 litre under the filter holder (13).
- Ensure that the selection button (D1) is in the O position (D1-1) (5).
- Fill the tank with a mixture of three parts water to one part vinegar or citric/sulfamic acid.
- Plug the appliance in (1). Switch on the appliance by pressing the on/off button (6).

- When the temperature light on the on/off button remains on, you can then move the selection button (D1) to the Espresso position (D1-2).
- Leave the mixture to cool (1/4 of the volume).
- Switch the appliance off by pressing the on/off button and leaving the selection button (D1) in the Espresso position (D1-2).
- Wait 5 to 10 minutes, then repeat the procedure twice.
- Ensure that you do not empty the tank completely (in the case of deactivation, see paragraph: **USING FOR THE FIRST TIME**).
- Now follow the descaling instructions for the steam function.

B. Descaling the steam system

- Place a container under the steam wand (9).
- Turn the selection button (D1) to the steam position (D1-4) (without switching off the preheat function (D1-3)).
- Switch on the appliance by pressing the on/off button (6).
- Leave the mixture to flow through the wand until steam appears.
- Turn the selection button to the O position (D1-1) (12).
- At this time the appliance will cool automatically, starting two to three pump cycles intermittently. Hot water and/or steam will flow into the drip tray.
- Wait 2 to 4 minutes, then repeat the procedure.
- Ensure that you do not empty the tank completely (in the case of deactivation, see paragraph: **USING FOR THE FIRST TIME**).

C. Rinsing



IMPORTANT!

After descaling, rinse two or three times with clean water (without coffee), as described in the paragraph on " USING FOR THE FIRST TIME".

Do not forget to rinse the steam wand. The appliance has been descaled and is ready to use again.

GUARANTEE

Your appliance is guaranteed, however, any connection or handling error, or use other than that described in the instructions will render the guarantee void.

This appliance is guaranteed for domestic use only, any other type of use will render the guarantee void.

No repairs due to a build-up of limescale shall be covered by the guarantee.

For any after-sales problem or for spare parts, please contact your retailer or an approved service centre.

SOLUTIONS TO POSSIBLE PROBLEMS

PROBLEMS	POSSIBLE CAUSES	SOLUTIONS
The grounds are very damp.	You haven't added enough ground coffee.	Add more coffee.
The espresso flows through too slowly.	The ground coffee is too fine, too greasy or floury.	Choose a slightly more granular coffee.
	The filter holder is dirty.	Clean the filter holder according to the instructions in paragraph CLEANING AND SERVICING - B. The filter holder . Clean also the filter.
	The grid through which the water passes is clogged.	When the appliance has cooled, clean the grid with a damp sponge.
	Your appliance has a build-up of limescale.	Descale your machine according to the instructions in the user manual.
The user sees prolonged water flow from the filter holder after making an espresso.	Scale build-up is occurring on your machine because of particularly hard water.	Immediately descale your machine as per the directions for use.
Presence of coffee grounds in the cup.	The filter holder is clogged.	Clean the filter holder with hot water.
	The coffee is too fine.	Use a slightly more granular coffee.
	The hinge on which the filter holder is mounted is clogged.	Clean the filter holder mount and hinge with a damp sponge.
No crema on the espresso.	The coffee is too old.	Use freshly ground coffee.
	The coffee is not suitable for espresso.	Use finer ground coffee.
	There is too little coffee in the filter.	Add ground coffee.
The water tank leaks when carried.	The valve at the bottom of the tank is dirty or defective.	Clean the water tank and open the valve at the bottom of the tank with a finger.
	The valve is blocked by limescale.	Descale your machine according to the instructions in the user manual.

PROBLEMS	POSSIBLE CAUSES	SOLUTIONS
Water is leaking under the appliance.	There's an internal leak.	Check that the tank is fitted correctly. If the leak continues, do not use the appliance, contact an approved service centre.
	The drip tray has not been fitted correctly.	Check that the drip tray is pushed to the back of the appliance.
	The drip tray is overflowing.	Empty and carefully rinse the drip tray and replace.
The cups have been filled unequally.	The filter holder is clogged.	Please refer to the paragraph on CLEANING AND SERVICING for servicing your filter holder.
The pump is abnormally hot.	There is no water in the tank.	Fill the tank with water and re-initiate the pump (see paragraph: USING FOR THE FIRST TIME). Avoid emptying the tank completely.
The espresso leaks over the edges of the filter.	The filter holder is not positioned correctly.	Put the filter holder in place and lock it (turning it from left to right as far as it will go).
		Remove excessive coffee grounds that prevent the filter holder to be locked.
	The rim of the filter holder is encrusted with coffee grounds.	Remove excessive coffee grounds and clean the grid through which water passes with a damp sponge.
	The soft capsule is positioned incorrectly.	Check that the soft capsule has been inserted correctly: the paper must not protrude out of the filter.
Your espresso tastes bad.	The appliance was not rinsed correctly after descaling.	Rinse the appliance according to the instructions and check the quality of the coffee.

PROBLEMS	POSSIBLE CAUSES	SOLUTIONS
The appliance doesn't work	The pump has been deactivated due to a lack of water.	Fill the tank with water and re-initiate the pump (see paragraph: USING FOR THE FIRST TIME). Avoid emptying the tank completely.
	The removable water tank has been fitted incorrectly.	Position the water tank correctly.
The steam wand does not foam the milk.	The steam wand is blocked or has an excess of limescale.	Descal the steam wand according to the paragraph on Descaling or unblock it using a needle.
	The milk is too hot.	Use fresh milk.
	The shape of the container is not suitable.	Use a small jug. Follow the milk foaming instructions (paragraph on STEAM FUNCTION).

If it is not possible to identify the cause of a malfunction, please contact an approved service centre. Never disassemble the appliance. (if the appliance has been disassembled, the guarantee may no longer be valid).

ELECTRIC OR ELECTRONIC PRODUCT AT END OF LIFE



■ We participate in the protection of the environment!

- ① Your appliance contains a number of materials that can be reused or recycled.
- Take it to a collection point or an approved service centre so that it can be dealt with appropriately.

安全指引

- 安全指引：在首次使用本产品前，请仔细阅读本说明，并妥善保管以便日后查阅。
- 本产品仅为家用电器。任何商业使用、不适当使用或因不符合使用说明而引起的故障，本公司概不负责且不在保修范围内。
- 本电器设计和制造的目的是为家用电器，并不适用于以下场所，且不在质保范围内：
 - 商店、咖啡馆以及其他工作环境的员工餐厅
 - 农舍
 - 旅馆、汽车旅馆和其他住宅性环境
 - 家庭式旅馆
- 儿童或在无成年人监管情况下禁止使用、清洁或维护该电器。
- 有心理、身体或者感官障碍、及不具备足够经验或知识的人员（含儿童）不允许使用该电器，除非有其监护人密切监督并进行指导。儿童玩耍时请远离该电器。
- 拆除包装并确保电器完好。如电源线或者插头损坏，不要使用电器，请先与 KRUPS 售后服务中心取得联系。
- 电源线损坏或电器损坏，请联系 KRUPS 售后服务中心进行更换，并只使用原厂零部件。本电器仅为家用电器。请在海拔 2000 米以下的地方使用。
- 为避免触电的风险，不要在湿手的情况下使用电器，也不要用水湿布擦拭电器，或在潮湿的表面上使用电器。切勿将电器机身、电源线或插头浸入水中或其他液体。
- 注意：不适当使用电器有可能导致人身伤害或者损坏机器。
- 注意：使用后，切勿触碰电器发热表面（过滤器手柄，蒸汽喷嘴等），表面仍有余热。
- 触碰正在使用或刚使用完的蒸汽喷嘴可能会引起烫伤。
- 8 岁以下儿童、不具备足够身体条件、经验、精神状态或知识的人员不允许使用该电器，除非有人员对他们的安全负责，密切监督并进行指导。切勿让儿童玩弄本电器。切勿让儿童清洁和维护本电器，除非儿童已满 8 岁且有人对他们密切监督指导。
- 请尽量避免 8 岁以下儿童接触电器和电源线。
- 未能正确接线而引起的故障，制造商不承担任何责任及保修义务。
- 切断电源时请勿拉扯电源线。
- 电器工作时，切勿移动过滤器手柄，此时电器内有压力产生。
- 产品在使用时出现任何异常情况（如异常噪音，气味，温度升高，烟雾等），请立即切断电源。
- 电器使用结束或进行清洗时，请关闭电器，切断电源。
- 电器非正常工作时，请切断电源。
- 勿将电源线挂于尖锐的边角或置于发烫、不平稳的表面。
- 电器及配件不适用于洗碗机清洗。

感谢您信任并选择KRUPS电器。您购买的是意式咖啡机系列中最小巧紧凑的一款。

CN



注意: 使用电器时请注意安全防范。在首次使用本产品前, 请仔细阅读本说明, 并妥善保管以便日后查阅。

电器描述

- | | |
|-----------------|------------|
| A 水箱上盖 | E 咖啡机出水口 |
| B 可拆卸水箱 | F 咖啡过滤器手柄 |
| C 咖啡杯架 | F1 单杯咖啡过滤器 |
| D 操作面板: | F2 双杯咖啡过滤器 |
| D1 选择旋钮(咖啡或蒸汽) | G 蒸汽喷嘴 |
| D1-1 O位置/意式咖啡预热 | H 咖啡杯盘 |
| D1-2 咖啡冲泡 | I 滴水盘 |
| D1-3 蒸汽预热 | J 电源线 |
| D1-4 蒸汽 | K 咖啡粉量勺 |
| D2 开/关键 (带指示灯) | |

技术参数

- 泵压系统压力: 15 巴
- 咖啡过滤器手柄
- 单杯或双杯咖啡
- 可放咖啡机料理包
- 蒸汽功能
- 5 分钟自动关机 (环保节能)
- 可拆卸水箱 (容量: 1 升)
- 功率: 1460 W
- 电压: 220V-240V~ 50 Hz
- 防止过热安全装置
- 尺寸: 高度 . 286 毫米, 宽度 . 145 毫米, 长度 . 315 毫米



重要!

电压: 本电器仅适用于220V-240V电压使用。本电器仅为家用电器。

实用贴士

建议选用新鲜烘焙的咖啡豆。咖啡豆经过烘焙后, 其新鲜度仅可以保留几个星期。良好的包装可以让咖啡豆保存更长的时间。如果不能确保包装的品质, 请选用近期烘焙的咖啡豆。请将咖啡豆研磨成咖啡粉后使用。

如何选择合适的咖啡豆？

■ 富有香气的咖啡豆

选择纯阿拉比卡咖啡豆或阿拉比卡咖啡豆占比高的混合咖啡豆。

建议选择手工烘焙的咖啡豆，因为他们可以释放层次丰富而微妙的香味。选择不同原产地的咖啡豆，感受不同的咖啡风味。

■ 醇厚口感的咖啡豆

选择罗布斯塔混合咖啡豆- 无需用 100% 阿拉比卡咖啡豆 - 意式烘焙，或意式咖啡豆。

- 将咖啡粉放入冰箱冷藏，可保持更久的风味。
- 切勿填满咖啡过滤器手柄，使用咖啡粉量勺（1 匙可制作 50 毫升的单杯咖啡，2 匙可制作各 50 毫升的双杯咖啡）。抹去咖啡过滤器的边缘多余的咖啡粉。
- 如果超过 5 天不使用电器，清空并冲洗水箱。
- 确保电器关闭的情况下，给水箱加水或者水箱清空。
- 请将电器置于平坦、稳定的表面。

首次使用或长时间不使用咖啡机

首次使用前，请冲洗并预热系统。

首次使用咖啡机前，用清水清洗干净所有配件并晾干。

按照以下步骤冲洗系统：

- 接入电源（图 1）。
- 打开水箱上盖（A）并取下水箱（B）（图 2）。
- 水箱内倒入常温水并将其放回咖啡机内，确保正确安装。盖上上盖（图 3- 图 4）。
- 确保选择旋钮（D1）处于 O 位置（D1-1）（图 5）。
- 轻按开 / 关键（D2）打开电器。短促嘟的一声，是正常现象。这是泵压系统开 / 关的声音（图 6）。
- 开关指示灯闪烁，然后长亮（图 7）。
- 将咖啡过滤器手柄（F）（不加咖啡粉）安装至电器上：尽可能向右旋转（图 8）。
- 将容量大于 0.5 升的容器放置在蒸汽喷嘴的下方（图 9）。
- 旋转选择旋钮至蒸汽预热处（D1-3）（图 10）。
- 开关指示灯闪烁后长亮：此时将选择旋钮旋转至蒸汽（D1-4）处约 20 秒（图 11）。
- 旋转选择旋钮至 O（D1-1）处（图 12）。
- 然后将一个 0.5 升的容器中放于咖啡过滤器手柄下方（图 13）。
- 旋转选择旋钮至意式咖啡（D1-2）处（图 14）。水经过水箱，流出相当于 4 杯 50 毫升咖啡容量的水，再将旋转选择旋钮至 O 处（图 15）。
- 如果没有水流出（泵已经工作的情况下），取下咖啡过滤器手柄重复进行操作。
- 冷却后，重复此过程四次并确保水箱里有水。
- 每次确保电器冷却后再进行下一次操作。
- 取出水箱，清空，仔细冲洗后放回原处。



注意！

本电器具有5分钟自动关机功能，节能环保。



注意！

每次开关机（按开/关键D2），电器都会发出嘟的一声响，是正常现象。这是泵压系统开启/关闭的声音(图4)。

意式浓缩咖啡冲泡



警告！

初次使用咖啡机，请根据“首次使用或长时间不使用咖啡机”内容进行清洗。

咖啡粉选用

咖啡粉的研磨精度决定了意式咖啡的强度和风味：咖啡粉越细，咖啡口感越强。

- 水箱内倒入常温水并将其放回咖啡机内，确保正确安装（图 3- 图 4）。
- 接入电源（图 1）。
- 轻按开 / 关键（D2）打开电器。短促嘟的一声，是正常现象。这是泵压系统开 / 关的声音（图 6）。
- 开关指示灯闪烁时表示咖啡机在预热，然后长亮（图 7）。此时咖啡机可以使用。
- 向左旋转咖啡过滤器手柄，将其取下（图 16）。
- 在咖啡过滤器手柄中放入单杯咖啡过滤器或双杯咖啡过滤器（图 17）。
- 使用咖啡粉量勺加入咖啡机（1 匙 = 1 杯，2 匙 = 1 杯）（图 18）。
- 去除咖啡机过滤器手柄边缘多余的咖啡粉。
- 先将咖啡过滤器手柄对准咖啡出口处左侧倒三角的地方，然后将咖啡过滤器手柄向右旋转，直到对准咖啡出口处右侧倒三角的地方并卡紧（图 8）。
- 将 1 个或 2 个咖啡杯放在滴水盘上，咖啡过滤器的正下方（图 19）。
- 旋转选择旋钮至意式咖啡（D1-2）处（图 19）。
- 几秒后，咖啡流出。
- 咖啡杯快满的时候，旋转选择旋钮至 O 处（图 15）。
- 拿取咖啡。
- 将咖啡过滤器手柄向左旋转。取出咖啡过滤器（图 16）。
- 取出单杯或双杯咖啡过滤器倾倒咖啡渣（图 20）。
- 用清水冲洗咖啡过滤器手柄和咖啡过滤器上的剩余咖啡渣（图 21）。
- 为了更好的咖啡口感，建议在加入咖啡粉前事先预热配件（咖啡过滤器手柄金属部分，咖啡过滤器和咖啡杯）。
- 连续冲煮 5 杯 50 毫升的咖啡后，请冷却电器再继续操作。

使用咖啡易理包

本产品可使用咖啡易理包（约 60 毫米直径大小）。使用不适用本机的咖啡易理包，会导致咖啡效果不佳。

- 水箱内倒入常温水并将其放回咖啡机内，确保正确安装（图 3- 图 4）。
- 轻按开 / 关键，打开电器（图 6）。
- 开关指示灯闪烁时表示咖啡机在预热，然后长亮。此时咖啡机可以使用（图 7）。
- 向左旋转咖啡过滤器手柄，将其取下（图 16）。将 1 份咖啡易理包放入咖啡过滤器手柄中。1 份咖啡易理包可以冲煮 1 杯咖啡。不建议同时使用 2 份咖啡易理包（图 22）。
- 将咖啡过滤器手柄向右旋转，直到对准咖啡出口处右侧倒三角的地方并卡紧（图 8）。
- 接下来重复咖啡粉冲煮咖啡步骤。

蒸汽功能

蒸汽功能用来制作奶泡（如，卡布奇诺）。

- 使用蒸汽前，旋转选择旋钮至蒸汽预热 (D1-3) 处（图 10）。
- 开 / 关指示灯闪烁时表示咖啡机在预热，然后长亮。此时咖啡机可以使用（图 7）。
- 奶缸里倒入 60-100 毫升牛奶。为了更佳效果，建议根据蒸汽喷嘴尺寸，选择相对小一点的奶缸。并选用冷藏牛奶。
- 指示灯长亮后，将蒸汽喷嘴放入奶缸内，切勿接触奶缸底部（图 23）。
- 旋转选择旋钮至蒸汽 (D1-4) 处（图 24）。
- 为最佳奶泡效果，首先将喷嘴放置奶缸的下方约 10 秒，但是不接触奶缸底部。然后慢慢倾斜并移动奶缸，将喷嘴位置置于牛奶表面处，但不能高于牛奶表面。确保牛奶不会喷溅出来。同时旋转奶缸，会有更好的奶泡效果（图 25）。
- 为了获得高品质的奶泡，建议使用巴氏杀菌或 UHT 奶，切勿使用未消毒或脱脂牛奶。
- 奶泡制作完成后，旋转选择旋钮至 O 处（图 12）。此时电器将自动冷却，开始 2 到 3 个间歇性泵循环。自动操作完成后，您就可以准备冲煮咖啡了。
- 关闭蒸汽后，使用湿布快速仔细清洗蒸汽喷嘴（确保奶垢不会堵塞蒸汽喷嘴）。
- 蒸汽喷嘴下放装有水的容器，并重复制作奶泡的蒸汽功能步骤，以清洁蒸汽喷嘴。
- 为了避免奶泡过热，切勿打奶泡超过 60 秒。
- 为避免电器过热，切勿使用蒸汽喷嘴超过 75 秒。

**重要！**

警告！为了避免牛奶飞溅，使用蒸汽功能时，切勿让蒸汽喷嘴置于牛奶表面或上方。

**重要！**

重要！警告！蒸汽喷嘴还是热的！小心不要烫伤自己！

**重要！**

关闭蒸汽后，立刻仔细清洗蒸汽喷嘴。详见“清洗保养”部分。

清洗保养

A. 电器

- 每次清洗前请拔下电源，冷却电器。
- 用湿布擦拭电器外部。清洗并晾干水箱，咖啡杯盘和滴水盘。
- 定期清洗水箱内部。
- 当水箱内出现白雾状颜色，需要进行除垢（参见“除垢”部分）。
- 切勿使用含酒精的清洁产品或溶剂。
- 切断电器电源后，定期用湿布清洗咖啡杯盘和咖啡机出水口密封件图（6）。
- 请仅使用湿布进行清洁，无需使用除垢剂和洗涤剂。

B. 咖啡过滤器手柄

- 使用湿布定期擦拭咖啡过滤器，清除表面残留的咖啡渣（图 26）。
- 为了延长咖啡机出水口密封件的使用寿命，如果咖啡机长时间不使用请将咖啡过滤器拆下来保存。
- 单杯或双杯咖啡过滤器如果被咖啡渣堵住，需要用针进行疏通（图 32）。

C. 滴水盘

务必定期清洗电器。如果连续冲煮意式咖啡，建议定期倾倒滴水盘（图 27- 图 28）（约每 5 杯）。滴水盘内有水是正常现象，并不会溢满流出。必要的话，用水掺少许温和的洗洁精清洗咖啡杯盘和滴水盘。然后清水冲洗并晾干。

D. 蒸汽喷嘴

- 将有水容器放在蒸汽喷嘴下方。
- 使用蒸汽前，旋转选择旋钮至蒸汽预热（D1-3）处（图 10）。
- 开 / 关键指示灯闪烁，然后长亮。此时可以开始进行蒸汽清洗循环。
- 指示灯长亮后，将蒸汽喷嘴插入水中。

- 旋转选择旋钮至蒸汽 (D1-4) 处 (图 24)。
- 打开蒸汽 20 秒。
- 关闭蒸汽, 用湿布快速并仔细清洗蒸汽喷嘴 (去除残留物)。
- 可用咖啡粉量勺的尾部拆除蒸汽喷嘴头, 疏通清洗蒸汽喷嘴头。注意切勿遗失蒸汽喷嘴头部的密封圈 (图 29)。
- 清水冲洗蒸汽喷嘴头, 并用湿布擦拭残留物 (图 30)。
- 可以用针疏通蒸汽喷嘴头。
- 用咖啡粉量勺将蒸汽喷嘴头拧回原处并确保安装牢固, 同时检查密封圈仍在。(图 31)。



警告!

重要! 切勿使用洗碗机清洗电器任何部件。

除垢

定期进行电器除垢, (详见 A 和 B 部分, 进行咖啡系统和蒸汽系统的除垢), 可有效延长电器使用寿命。除垢频率与水硬度有关。可了解当地水硬度。

除垢过程中, 切勿将电器置于大理石工作台面。除垢剂可能损坏大理石。

- 通过下表, 你可以根据电器使用的水硬度了解除垢的频率:

除垢频率			
每周冲煮咖啡杯数	软水 (<19°F)	硬水 (19-30°F)	非常硬的水 (30-30°F)
少于 7 杯	少于 7 杯	每 8 个月	每 6 个月
7 杯 - 20 杯	7 杯 - 20 杯	每 8 个月	每 2 个月
多于 20 杯	多于 20 杯	每 8 个月	每 1 个月

如有疑问, 建议每月除垢。

由于以下情况造成的电器损坏:

- 使不除垢或未定期除垢,
 - 水垢堆积,
 - 配件进洗碗机清洗,
- 本公司概不负责且不在保修范围内。

A. 系统除垢

- 切断电源。
- 将咖啡过滤器手柄 (不加入咖啡粉) 向右旋转, 直到对准咖啡出口处右侧倒三角的地方并卡紧 (图 8)。
- 确保选择旋钮 (D1) 在 O 处 (D1-1)(图 5)。
- 用 3:1 比例的水和醋 (或者柠檬酸 / 氨基磺酸)。
- 接入电源 (图 1)。按开 / 关键开启产品 (图 6)。

- 当开 / 关指示灯长亮时，旋转选择旋钮 (D1) 至意式咖啡处 (D1-2)。
- 冷却除垢后的废水 (1/4 的容量)。
- 按开 / 关键，开启电器，旋转选择旋钮 (D1) 至意式咖啡 (D1-2) 处。
- 5 至 10 分钟后，重复除垢过程 2 次。
- 确保水箱内有水 (在没有水的情况下，详见：首次使用部分)。
- 现在进行蒸汽系统除垢。

B. 蒸汽系统除垢

- 在蒸汽喷嘴下方放容器 (图 9)。
- 旋转选择旋钮 (D1) 至蒸汽处 (D1-4) (不关闭预热蒸汽功能 (D1-3))。
- 按开 / 关键，开启电器 (图 6)。
- 让除垢液冲洗蒸汽喷嘴。
- 旋转选择旋钮至 O 处 (D1-1) (图 12)。
- 此时电器自动关闭，进行 2 至 3 次间歇性抽水。热水 / 蒸汽会流入滴水盘。
- 2 至 4 分钟后，重复上述除垢步骤。
- 确保水箱内有水 (在没有水的情况下，详见：首次使用部分)。

C. 清洗



重要！

除垢后，用清水冲洗(不含咖啡)2至3次，详见“首次使用”部分。切勿忘记清洗蒸汽喷嘴。此时咖啡机已经完成除垢，可再次使用。

质保

电器在质保范围内。但是由于未能正确接线或未正确操作而造成的电器故障，制造商概不承担任何责任及保修义务。

本电器仅为家用电器，非家用而造成的电器故障，制造商概不承担任何责任及保修义务。

由于堆积水垢造成的电器故障，不在保修范围内。

对于任何配件的售后问题，请联系 KRUPS 售后服务中心。

故障排除

除垢频率	原因	解决方案
咖啡渣过湿。	咖啡粉量不足。	加入更多咖啡粉。
咖啡流速过慢。	咖啡粉研磨过细，过油或过于粉状。	更换咖啡粉类型。
	咖啡过滤器手柄过脏。	根据“清洗保养 -B 咖啡过滤器手柄”部分清洗咖啡过滤器手柄。同时清洗咖啡过滤器。
	咖啡流出口堵塞。	待电器冷却后，用湿布清洗咖啡流出口。
	电器内水垢堆积。	根据说明书内“除垢”部分进行除垢。
冲煮完意式咖啡后，仍然有水从咖啡流出口中流出。	水垢堆积，尤其是硬水更容易造成水垢。	根据说明书内“除垢”部分进行除垢。
咖啡杯中有咖啡渣。	咖啡过滤器手柄堵塞。	用清水清洗咖啡过滤器手柄。
	咖啡粉过细。	更换咖啡粉类型。
	咖啡过滤器手柄四周有咖啡渣散落。	用湿布清洗咖啡出水口和咖啡过滤器手柄。
咖啡杯中有咖啡渣。	咖啡粉放置时间太久。	使用新鲜咖啡粉。
	咖啡粉不适用于意式咖啡机。	更换研磨更精细的咖啡粉类型。
	咖啡粉量过少。	增加咖啡粉量。
水箱拿取时漏水。	水箱底部出水阀过脏或破损。	清洗水箱底部，打开水阀并进行更换。
	水箱底部出水阀被水垢堵住。	根据说明书指示对电器进行除垢。

问题	原因	解决方案
电器下方漏水。	电器内部漏水。	检查水箱正确安装。如果电器继续漏水，请勿使用电器，将其送至 KRUPS 服务中心。
	滴水盘未正确安装。	检查滴水盘在电器背部安装牢固。
	滴水盘废水溢出。	清空并仔细清洗滴水盘，将其放回原处。
制作双杯咖啡时，咖啡杯量不同。	咖啡过滤器堵住。	请详见“ 清洗保养 ”部分清洗咖啡过滤器
泵压系统过热。	水箱内没有水。	水箱内加入水并重新启动泵压系统（详见“ 首次使用 ”部分）。确保水箱内有水
意式咖啡从咖啡过滤器手柄边缘流出。	咖啡过滤器手柄未正确安装。	将咖啡过滤器手柄正确安装（尽可能向右拧紧）。
		取出咖啡过滤器手柄。
	咖啡过滤器手柄上咖啡流出口被咖啡粉堵住。	去除多余的咖啡机粉，并用湿海绵清洗咖啡过滤器手柄内咖啡流出口。
	咖啡易理包未放置在正确位置。	检查咖啡易理包未超出咖啡过滤器。
咖啡口味欠佳。	电器未定期除垢。	根据说明书清洗咖啡机，同时检查咖啡粉的品质。

问题	原因	解决方案
电器不工作。	由于缺水，泵压系统不启动。	水箱内加水，重新启动泵压系统（详见： 首次使用 ）。确保水箱内有水。
	水箱未正确安装。	正确安装水箱。
蒸汽喷嘴打不出奶泡。	蒸汽喷嘴被水垢堵住。	用针进行蒸汽喷嘴的除垢，详见说明书除垢部分。
	牛奶过热。	使用新鲜牛奶。
	奶缸不合适。	使用小奶缸。详见说明书里 蒸汽功能 部分。

如果您的电器仍然不能正常工作，请联系 KRUPS 售后服务中心。切勿私自拆卸电器（如果电器被私自拆卸，本公司概不负责且不在保修范围内）。

回收利用

- 本产品符合 GB4706.1 和 GB4706.19 国家标准
 制造商名称：GROUPE SEB MOULINEX EN ABREGE GSM
 制造商地址：Rue Saint-Leonard 53100 Mayenne France
- 电器或电子产品使用寿命耗尽
- 本电器可以使用很多年。当您打算替换它时，请不要像日常生活垃圾一样扔掉或在垃圾填埋场填埋。请将它送到送至合适的垃圾收集中心处理



让我们一起保护环境！

- ① 您的电器包含很多可循环再用或可回收的材料。
- ➡ 请将电器送往城市垃圾回收站。